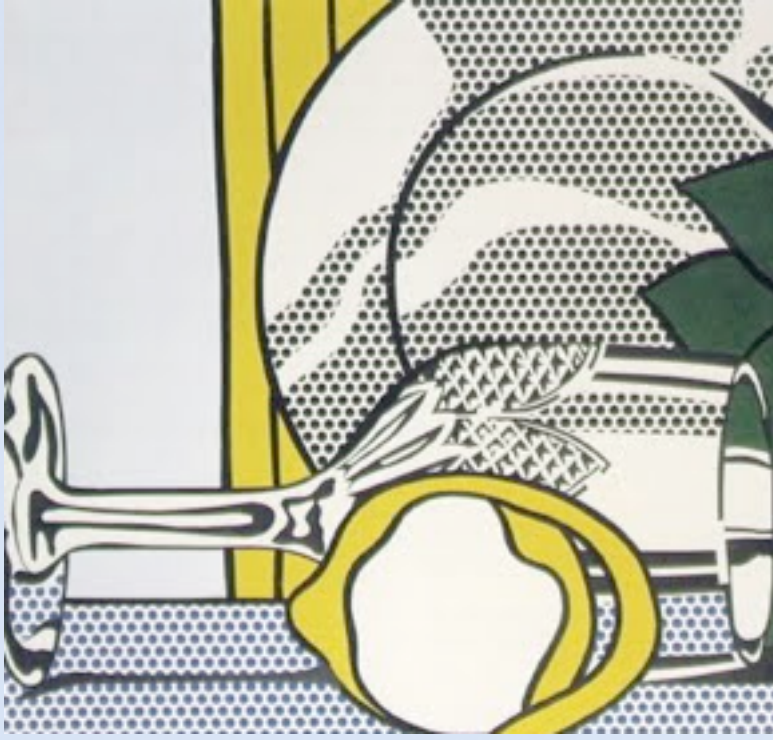


Basic artist analysis

Mr Muncaster

Roy Lichtenstein: Peeled lemon



On the left is a famous still life painting. You must use it as a starting point to your artist research and sketchbook experimentation. Below is a series of questions I would like you to answer. Do not write on this worksheet, find a copy of the artwork on the Internet and write out your analysis using full sentences in your sketchbook.

Describe the artwork. Use subject specific vocabulary. Do you like it? If so why?

How does it relate to your project and are there any techniques you could use in your sketchbook experimentation.

How would you make a piece of art like this? Describe the sequence.

What materials would you need?

Who is the artist and what interesting facts about his artwork can you find out.

Change three things about this work and copy it into your sketchbook.

Basic artist analysis

Mr Muncaster



On the left is a famous still life painting. You must use it as a starting point to your artist research and sketchbook experimentation. Below is a series of questions I would like you to answer. Do not write on this worksheet, find a copy of the artwork on the Internet and write out your analysis using full sentences in your sketchbook.

Describe the artwork. Use subject specific vocabulary. Do you like it? If so why?

How does it relate to your project and are there any techniques you could use in your sketchbook experimentation.

How would you make a piece of art like this? Describe the sequence.

What materials would you need?

Who is the artist and what interesting facts about his artwork can you find out.

Change three things about this work and copy it into your sketchbook.

Roy Lichtenstein: Crystal vase